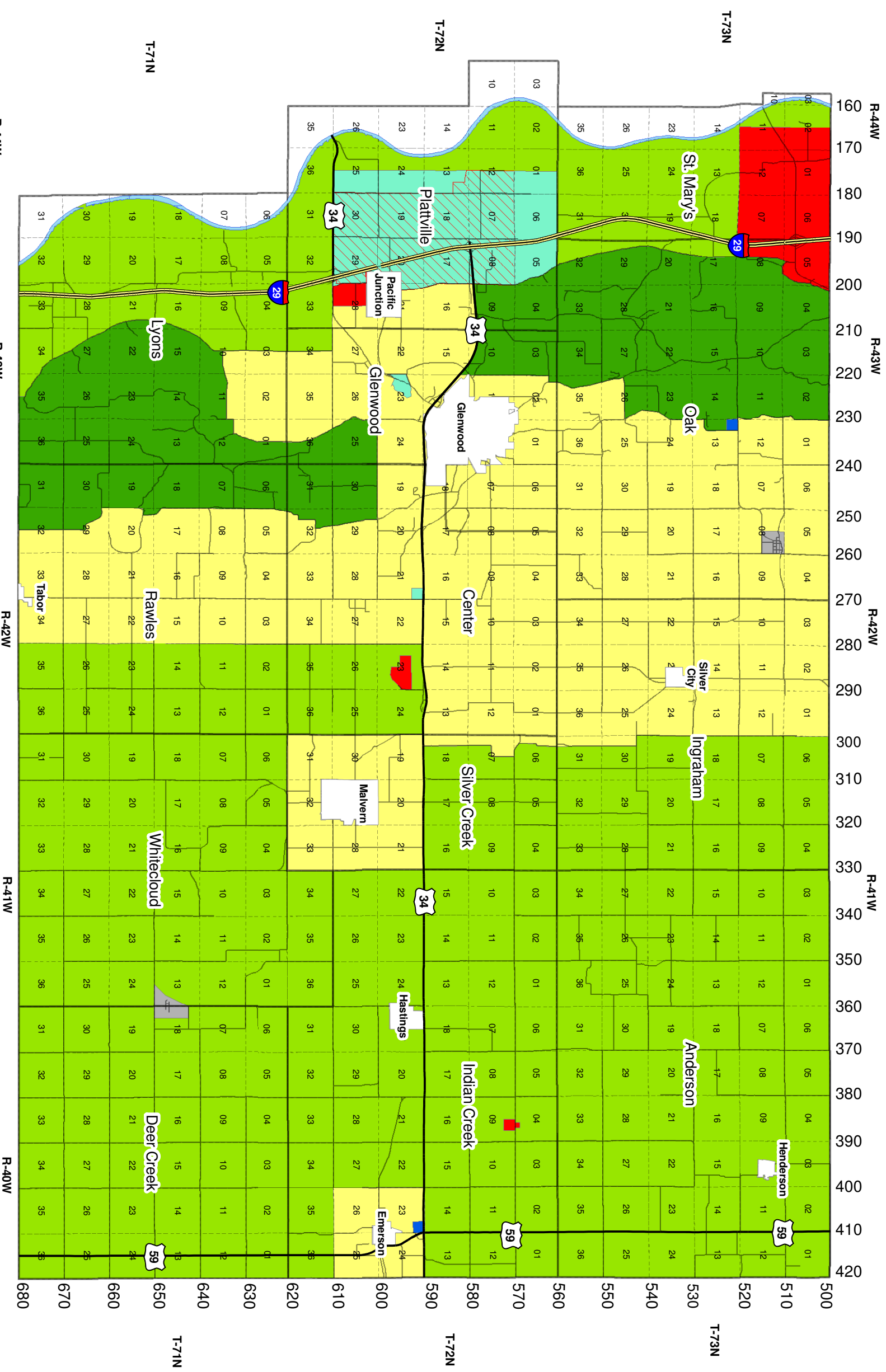
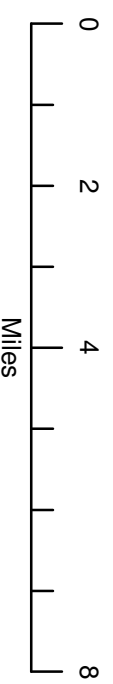


Mills County, Iowa Official Zoning District Map



Zoning Legend

- Agricultural
- Agricultural//Residential
- Convenience Commercial
- Corridor Overlay District
- Highway Commercial
- Incorporated Area
- Industrial
- Loess Hills Conservation Development
- Village



Map Scale 1:150,000

Created by Mills County GIS, 5-15-2011