

Mills County Conservation Board

Upcoming Event Highlights

*Nature Detectives-
Tuesdays in June*

*Tiny Nature
Adventures-
Wednesdays in
June*

*Nature Connect-
Thursdays in June*

*Canoeing at Mile
Hill Lake- June 22nd*

*Canoe Float on the
Nishnabotna River-
July 6th*

*Nature Painting-
July 21st*

*More program
details and
contact
information
located in
newsletter.*

Pony Creek Nature Center

Pony Creek Nature Center is open to visitors year-round. The hours are Monday thru Friday, from 9:00 am to 3:00 pm. During the summer, starting on June 2nd, the building will also be open on Saturday's 10:00 am-2:00pm. In the Nature Center you will find live native animals, animal mounts, informational boards and hands on activities. New displays are always in progress, so visit often. The Nature Center deck is always open and has a great view with three picnic tables.

Free environmental education programs are provided for school groups and the public. If you are interested in scheduling a program or for more information please give the Naturalist a call at 712-527-9685.

During the Spring fieldtrip season over 500 students from Glenwood and East Mills visited Pony Creek Nature Center. Other activities the students participated in on their visits included- fishing, canoeing, hiking, getting the chance to hold "Steve" (the black rat snake), making milkweed seedballs, and scavenger hunts. Pony Creek Nature Center is a great resource for the schools and provides FREE programs and fieldtrips.



Grants and Donations

The Mills County Community Foundation awarded MCCB a \$15,000 grant to help with the cost of replacing a picnic shelter at Pony Creek Park. The support of this great organization is always appreciated and provides the opportunity for some many exciting projects.

A grant from the Iowa DNR Wildlife Diversity Program provided \$500 of funding for the purchase of a Bat Detector and an iPad. The bat detector can detect and identify bats as they echolocate. This fun tool will be used during evening environmental education programs!

Delanine Jones of Glenwood donated a beautiful, little mink mount to the Nature Center that is now on display in the gallery. Donations like this one are special because they provide unique items for visitors to see.

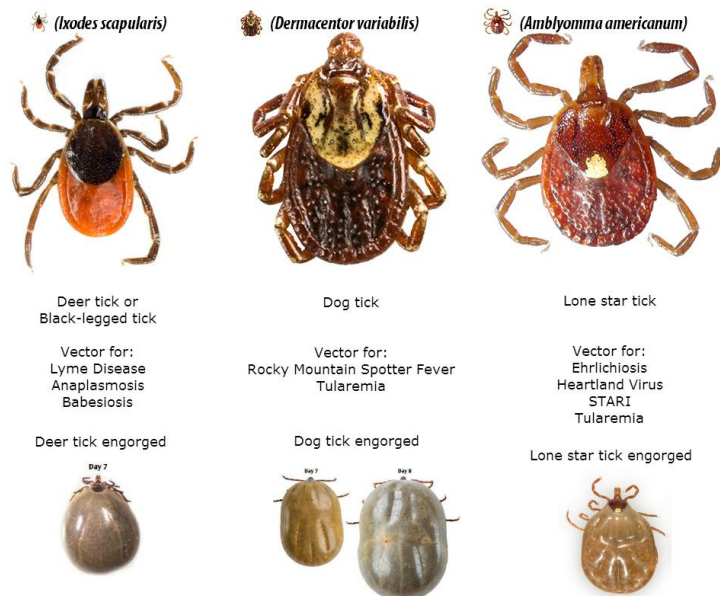
Mills County Neighbor

Ticks are never a welcome neighbor, unfortunately these small arachnids are quite common in Mills County. More than a dozen species can be found in Iowa but there are three that are most frequently encountered; blacklegged ticks (aka-deer tick), the American dog tick (aka-wood tick), and the lone star tick. The blacklegged tick can transmit Lyme disease, the American dog tick can carry the bacteria that causes Rocky Mountain Spotted Fever and the Lone Star tick can transmit the bacteria that causes several lesser known infections. The good news is that the majority of tick bites do not transmit any harmful microbes. Ticks require a blood meal to complete each stage of their life cycle. All three species have a similar cycle that begins with a thousand or more eggs deposited in a mass on the ground. Larvae emerge from the eggs and develop into nymphs, which then become adults. Larval ticks, also known as seed ticks, can be distinguished by their small size and only having six legs. Nymphs and adults are larger and have eight legs. The ticks of medical importance in Iowa all feed on a variety of small vertebrate hosts (typically rodents or birds) as larvae and nymphs and then move to larger hosts (deer, dogs, humans) as adults.

Prevention is the best way to keep yourself safe from tick-borne disease.

- Wear light-colored clothing to make it easier to spot ticks.
- Use a tick specific, EPA approved repellent that contains DEET.
- During tick season, perform regular tick checks at least once a day on yourself and especially children. Pay close attention to the head and neck areas. Also, don't forget to check your pets that are indoor/outdoor companions.

Removing attached ticks should be done carefully using tweezers to grasp the tick's mouthparts where they have entered the skin. Pull directly away from the skin and dispose of the tick immediately. Always remember to clean the area and disinfect the site of the bite. We can't always pick our neighbors so it's essential to learn to live safely with them.



Summer Day Camps at Pony Creek Nature Center

Tiny Nature Adventures

Dates: Every Wednesday in June (6th, 13th, 20th, 27th)

Ages: 3-5 years old

Time: 10:00-11:00am

Nature themed activities and outdoor exploration. Adult must stay with child and pre-registration is required for planning purposes, 712-527-9685.

Nature Detectives

Ages: 6-9 years

Dates: Tuesday's in June (5th, 12th, 19th, 26th)

Time: 9:00am-12:00

Let's put those curious minds to work learning and exploring. Class sizes will be limited, so please pre-register ASAP by calling 712-527-9685. Kids should wear clothes and shoes that can get dirty and bring a refillable water bottle, sunscreen and bug spray. Pond study, nature art, journals, and much more!

Nature Connect

Ages: 10-13 years

Dates: Thursday's in June (7th, 14th, 21st, 28th)

Time: 9:00am-12:00

It's time to get outside and connect with Nature. Class sizes will be limited, so please pre-register ASAP by calling 712-527-9685. Kids should wear clothes and shoes that can get dirty and bring a refillable water bottle, sunscreen and bug spray. More information is available upon registration.

Health--- Nature---Exploring Ecosystems---Fishing--- Canoeing and much more!!

Upcoming Public Programs

Canoeing at Mile Hill

June 22nd @ 9:00am-11:00am

Mills County Conservation will provide canoes, paddles and life jackets on a first come first serve basis for anyone interested in an outdoor adventure around the lake. Mile Hill is located at 21193 Us Hwy 34 west of Glenwood. Give us a call if have any questions, 712-527-9685!

Canoe Float on the Nishnabotna-

July 6th @ 10:00 am

We will float from Washburn Landing on Hutchings Ave to Fisher Wildlife Management Area, which takes approximately 4 hours with stops along the way. Canoes and life jackets will be provided, you are responsible for bringing your own lunch and drinks. **Space is limited so please call 712-527-9685 and reserve your spot.**

Nature Painting- July 21st @ 2:00-4:00pm

Join Hannah Rief, owner of the Creative Canvas, for a fun paint class at Pony Creek Nature Center. Cost for the class is \$30. Pre-registration is required, class is limited to the first 20 people. Call 712-527-9685 or visit Hannah's website,

<https://www.getcreativewithhannah.com/events!>



White Daisy

Pre-registration contact information:

Phone: 712-527-9685

Email: millsccbia@hotmail.com

Pre-registering helps us plan accordingly for programs.

Mills County Conservation

More programs will be scheduled throughout the summer. Please keep an eye on the Mills County Conservation Board Facebook page and local newspapers!

Contact information

Mills County
Conservation
Pony Creek Park
56235 Deacon Rd
Pacific Junction, IA
51561

PHONE:
(712) 527-9685

E-MAIL:
millsccbia@hotmail.com

Website:
www.millscoia.us/index.
php/depts/conservation



Mills County Conservation Board:

MCCB Staff:

Jerad Getter, Director
Dessa Montgomery, Naturalist
Zach Kohlhoff, Specialist
Jesse Ayers, Technician

MCCB Board Members:

George Marshall, Malvern
Lana White, Hastings
Kreg Kinzle, Glenwood
Ted Golka, Glenwood

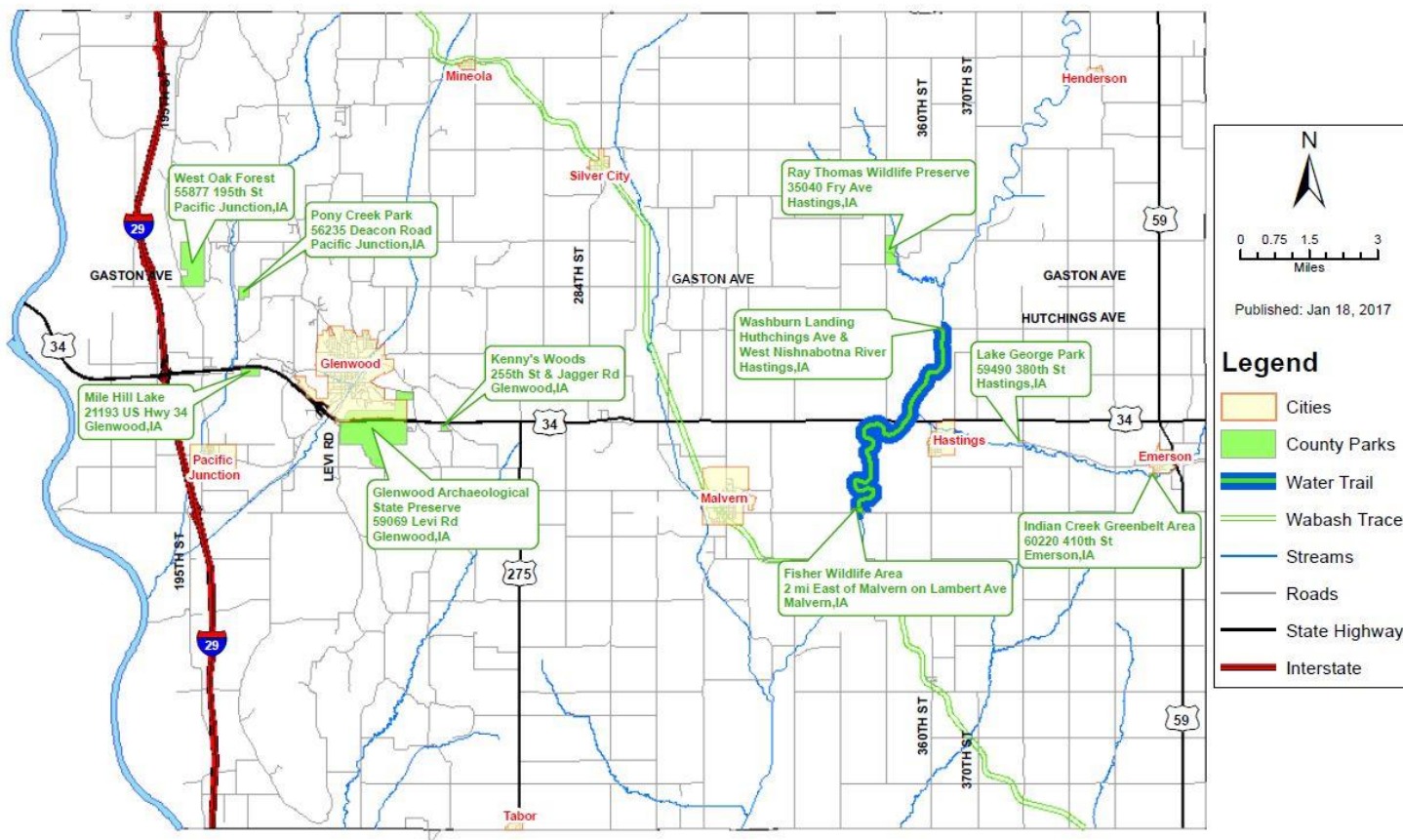


The Mills County Conservation Board is committed to providing the citizens of Mills County with quality outdoor recreation areas and opportunities for environmental education experiences. Please take advantage of these services and visit the nearly 1,800 acres of public land available!

CONSERVATION MATTERS
MILLS COUNTY CONSERVATION
56235 DEACON RD
PACIFIC JUNCTION, IA 51561



Summer 2018



West Oak Forest

308 acres in the Loess Hills consisting of woodlands and prairie, open for hiking and nature viewing.

Pony Creek Park

83 acres of woodland and small prairie remnants in the Loess Hills. This park provides two open shelters, 3 pit latrines, 6 electrical camping sites, primitive camping sites, playground, hiking trails, a scenic overlook and the Pony Creek Nature Center.

Mile Hill Lake

39 acres of woodlands with a 10- acre fishing lake. Provides a boat ramp, hiking trails, scenic overlook and is open to public hunting.

Glenwood Archaeological State Preserve/ Foothills Park

906 acres of hay field/ag land, reconstructed prairie, and woodlands. Rich archaeological significance, paved trails, fruit trees, great birding location.

Kenny's Woods

20 acres of woodland, open for nature viewing.

Fisher Wildlife Area

20 acres of reconstructed prairie, woodlands, and the River. Paddlers access ramp with parking area, open to public hunting

Ray Thomas Wildlife Pres.

90 acres open for passive use ONLY, reconstructed prairie, cropland, woodland, creek

Washburn Landing

Canoe/kayak access ramp with parking area. Access from east side of the river.

Lake George Park

11 acres, picnic shelter, grill and two-acre pond

Indian Creek Greenbelt Area

17 acres reconstructed prairie, creek access, fruit trees

Wabash Trace Nature Trail

25 miles of biking/hiking trail. Former railroad corridor with limestone surface with access points in Malvern, Silver City, Mineola.